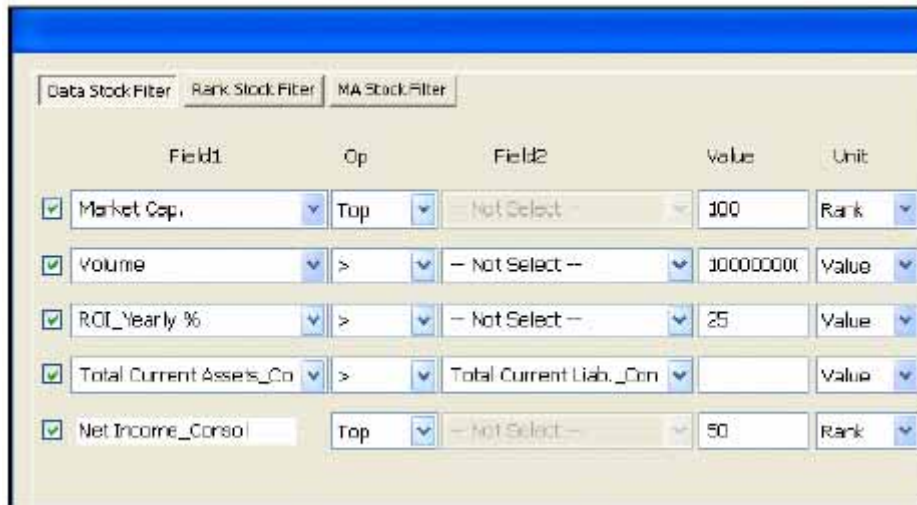
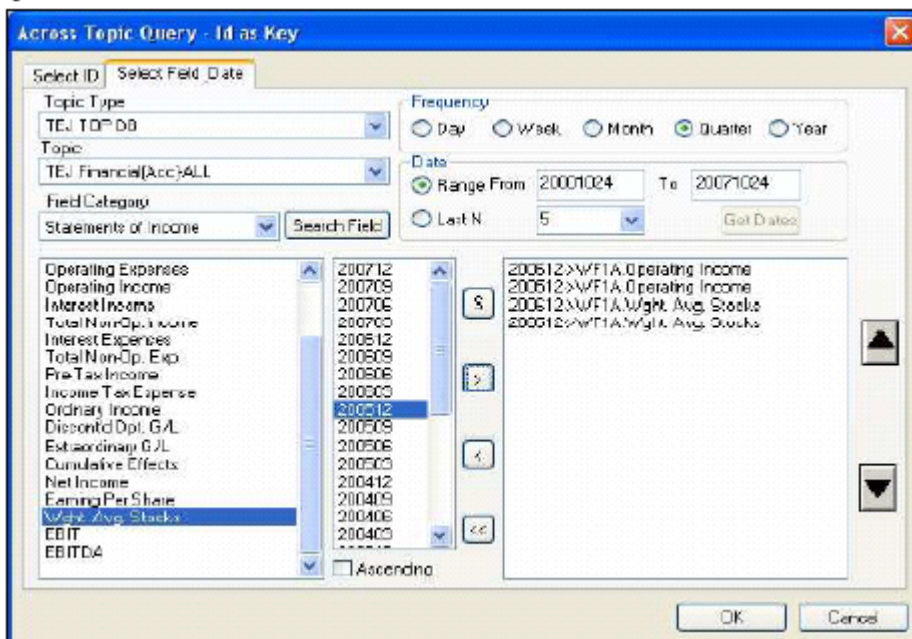


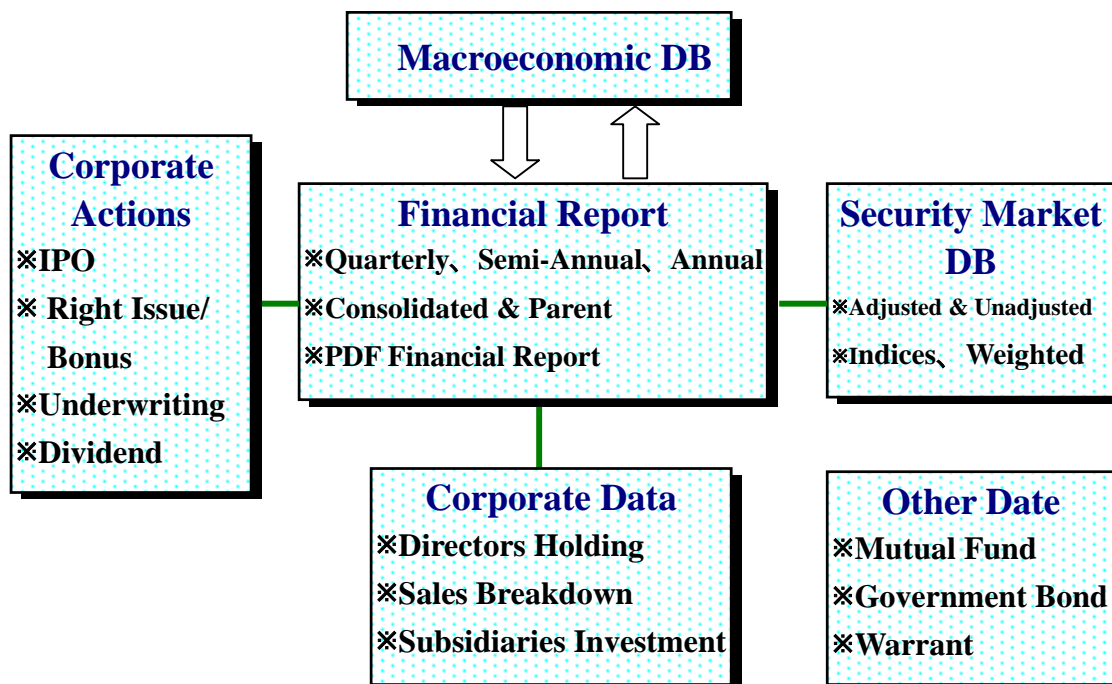
Although the TEJ-Plus software is a powerful screening tool on its own, the ease of manipulating data and exporting required data to other in-house applications makes it a very attractive option for all institutions active in East Asian markets.



The powerful and intuitive interface helps save time in screening through the thousands of companies in the database and its numerous functions allow the user to effortlessly filter out all but the companies that fit the desired performance parameters. The software also allows for 3-dimensional matrices for identifying trends over specific time series.



Greater China Database Coverage (TW, HK, CN) :



Taiwan Database Coverage :

- ◇ 709 companies listed and traded at Taiwan Stock Exchange (TAIEX).
- ◇ 551 companies listed and traded at GreTai Securities Market (GTSM).
- ◇ 242 public offering companies traded in the Taiwan Emerging Market.

* as of May 2008

Macroeconomic Indicators Database :

- More than 2000 items from national accounts

Financial Report Database :

- Over 300 fields from Balance Sheet, Income Statement and Cash Flow
- Footnote and Disclosure
- Financial Ratios
- Sales (Monthly)

Financial report type :

- Parent : Quarterly, Semi-Annual, Annual
- Consolidated : Annual, Semi-Annual

Security Market Database :

- Adjusted/Unadjusted trade prices
- Main/Sector Indices
- Warrants, Futures

Corporate Actions Database :

- IPO and Underwriting information
- Bonus/Right issue detail data
- Cash Dividend

Corporate Database

- Director and Supervisors Holding
- Monthly/Yearly Sales Breakdown
- Holder Structures
- Subsidiaries Investment Details

PDF Financial Report:

- Annual/Interim financial for all listed company.
- All Reports are stored in image file in PDF format

Taiwan Mutual Fund Database :

- Mutual Fund attribute
- NAV and ROI
- Fund's Holding (weekly/monthly)

Taiwan Bonds Database :

- Bonds attribute
- CB Issue detail information
- Bonds Trading Prices



Hong Kong Database Coverage :

- ◇ 1057 companies listed at Hong Kong Stock Exchange.
- ◇ 191 companies listed at Growth Enterprise Market

* as of May 2008

Macroeconomic Indicators Database :

- More than 400 items from national accounts

Financial Report Database :

- Over 250 financials from Balance sheet, Income Statement and Cash Flow
- Footnote and Disclosure
- Financial Ratios
- Annual and Semi-Annual Report
- Consolidated and Parent

Corporate Action Database :

- IPO and Underwriting information
- Bonus/Right issue detail data
- Cash Dividend

Security Market Database :

- Adjusted/Unadjusted trade prices
- Main/Sector Indices

Corporate Database :

- Director and Supervisors
- Sales Breakdown
- Subsidiaries Investment detail

PDF Financial Report

- Annual/Interim financial for all listed at HKSE and HKGEM
- All Reports are stored in PDF format

Bonds Database

- Government Bonds attribute
- Government Bonds Price



China Database Coverage:

- ◇ 864 companies listed at Shanghai Stock Exchange (A share 854、 B share 54)
 - ◇ 544 companies listed at Shenzhen Stock Exchange (A share 719、 B share 55)
- *as of May 2008

Macroeconomic Indicators Database :

- More than 1000 items from national accounts

Financial Report Database :

- Over 250 financial from Balance Sheet, Income Statement and Cash Flow
- Footnote and Disclosure
- Financial Ratios
- Annual and Semi and Quarterly

- Consolidated and Parent

Corporate Action Database :

- IPO and Underwriting information
- Bonus/Right issue detail data
- Cash Dividend
- General Shareholder Meeting data

Security Market Database :

- Adjusted/unadjusted trade prices
- Main and sector indices with constituents
- Warrants

Corporate Database :

- Director and supervisors Holding
- Sale breakdown
- Holder structures
- Subsidiaries Investment detail

China Mutual Fund Database :

- Mutual fund attribute
- Fund's NAV、 ROI
- Fund Holding

China Bonds database :

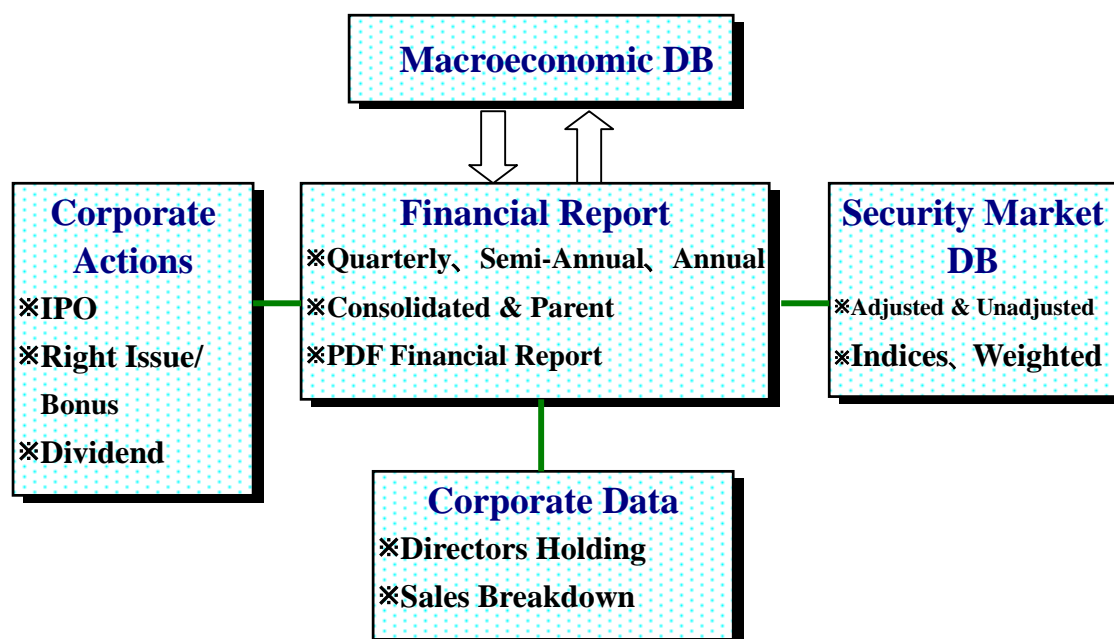
- Government Bonds attribute
- Government Bonds Price

PDF Financial Report:

- Annual/Interim financial for all listed A and B shares companies
- All Reports are stored in image file in PDF format

Emerging Asia Database Coverage:

(Currently includes Korea, Thailand, Philippines, Singapore, Malaysia)



PDF Financial Report:

- Annual/Interim Financial for all listed companies in Asian Emerging countries.
- All Reports are stored in image file in PDF format



Korea Database Coverage :

- ◇ 757 companies listed and traded at Korea Stock Exchange (KSE).
 - ◇ 1025 companies listed and traded at KOSDAQ Stock Market
- * as of May 2008

Macroeconomic Indicators Database :

- More than 600 items from national accounts.

Financial Report Database :

- 300+ financial from Balance Sheet, Income Statement and Cash Flow
- Footnote and disclosure and Ratio
- Annual and Semi-Annual report
- Consolidated and Parent

Corporate Action Database :

- Bonus/Right issue detail data
- Split & Merge detail data
- Convert from warrant, option and bonds
- Cash Dividend

Security Market Database :

- Adjusted/unadjusted trade prices
- Main/Sector indices

Corporate Database :

- Director and Supervisors
- Sales Breakdown



Thailand Database Coverage :

- ◇ 503 companies listed and traded at Stock Exchange of Thailand (SET)
 - ◇ 50 companies listed and traded at Market for Alternative Investment (MAI)
- * as of May 2008

Macroeconomic Indicators Database :

- More than 600 items from national accounts

Financial Report Database :

- 250+ financial from Balance Sheet, Income Statement and Cash Flow
- Footnote and Disclosure and Ratio
- Annual and Quarterly Report
- Consolidated and Parent

Corporate Action Database :

- Bonus/Right issue detail data
- Split & Merge detail data
- Convert from warrant, option and bonds
- Cash Dividend

Security Market Database :

- Adjusted/Unadjusted trade prices
- Main/Sector Indices

Corporate Database :

- Directors and Supervisors



Philippines Database Coverage :

✧ 251 companies listed and traded at Philippine Stock Exchange (PSE)

* as of May 2008

Macroeconomic Indicators Database :

- More than 400 items from national accounts

Financial Report Database :

- Over 300 financial from Balance Sheet, Income Statement and Cash Flow
- Footnote and disclosure and Ratio
- Annual and Quarterly Report
- Consolidated and Parent

Corporate Action Database :

- Bonus/Right issue detail data
- Split & Merge detail data
- Convert from warrant, option and bonds
- Cash Dividend

Security Market Database :

- Adjusted/unadjusted trade prices
- Main/sector indices

Corporate Database :

- Director and supervisors
- Sale breakdown



Singapore Database Coverage :

✧ 627 companies listed and traded at Singapore Exchange Main Board

✧ 150 companies listed and traded at Singapore Exchange SESDAQ

* as of May 2008

Macroeconomic Indicators Database :

- More than 500 items from national accounts

Financial Report Database :

- 300+ financials in Balance Sheet, Income Statement and Cash Flow
- Footnote and disclosure and Ratio
- Annual and Quarterly report
- Consolidated

Corporate Action Database :

- Bonus/Right issue detail data
- Split & Merge detail data
- Convert from warrant, option and bonds
- Cash Dividend

Security Market Database :

- Adjusted/Unadjusted trade prices
- Main/Sector indices



Malaysia Database Coverage :

- ◇ 704 companies listed and traded at Bursa Malaysia Main Board
- ◇ 223 companies listed and traded at Bursa Malaysia Second Board
- ◇ 126 companies listed and traded at Bursa Malaysia MESDAQ

*as of May 2008

Macroeconomic Indicators Database :

- More than 400 items from national accounts

Financial Report Database :

- 300+ financials in B/S, I/S and C/F
- Footnote and disclosure and Ratio
- Annual and quarterly report
- Consolidated and Parent

Corporate Action Database :

- Bonus/Right issue detail data
- Split & Merge detail data
- Convert from warrant, option and bonds
- Cash Dividend

Security Market Database :

- Adjusted/unadjusted trade prices
- Main/sector indices

Contact us:



www.finasia.biz

Taiwan

11F, No.57, Dong Xing Rd.,
Taipei, Taiwan R.O.C
TEL:+886-2-87681088
tejplus@tej.com.tw

Hong Kong

Suite 1202, Thomson Centre,
N0.78, Thomson Road,
Wanchai, Hong Kong
TEL:+852-25861708
tejplus@tej.com.tw

Japan

4F,ACM Bldg.,21-6
Yanagibashi 2-chome,
Taito-ku, Tokyo,111-0052, JAPAN